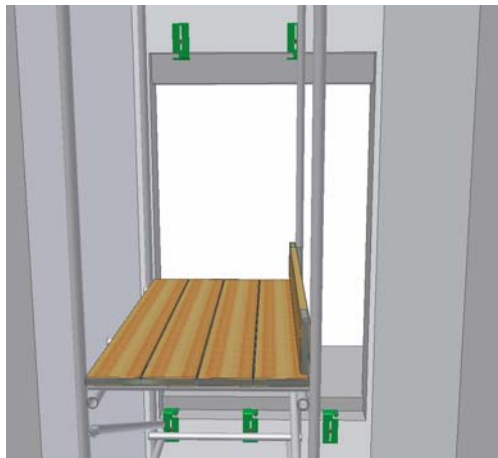


Guidance Notes for Installing the MRLiA Controller Cabinet into Landing Entrance

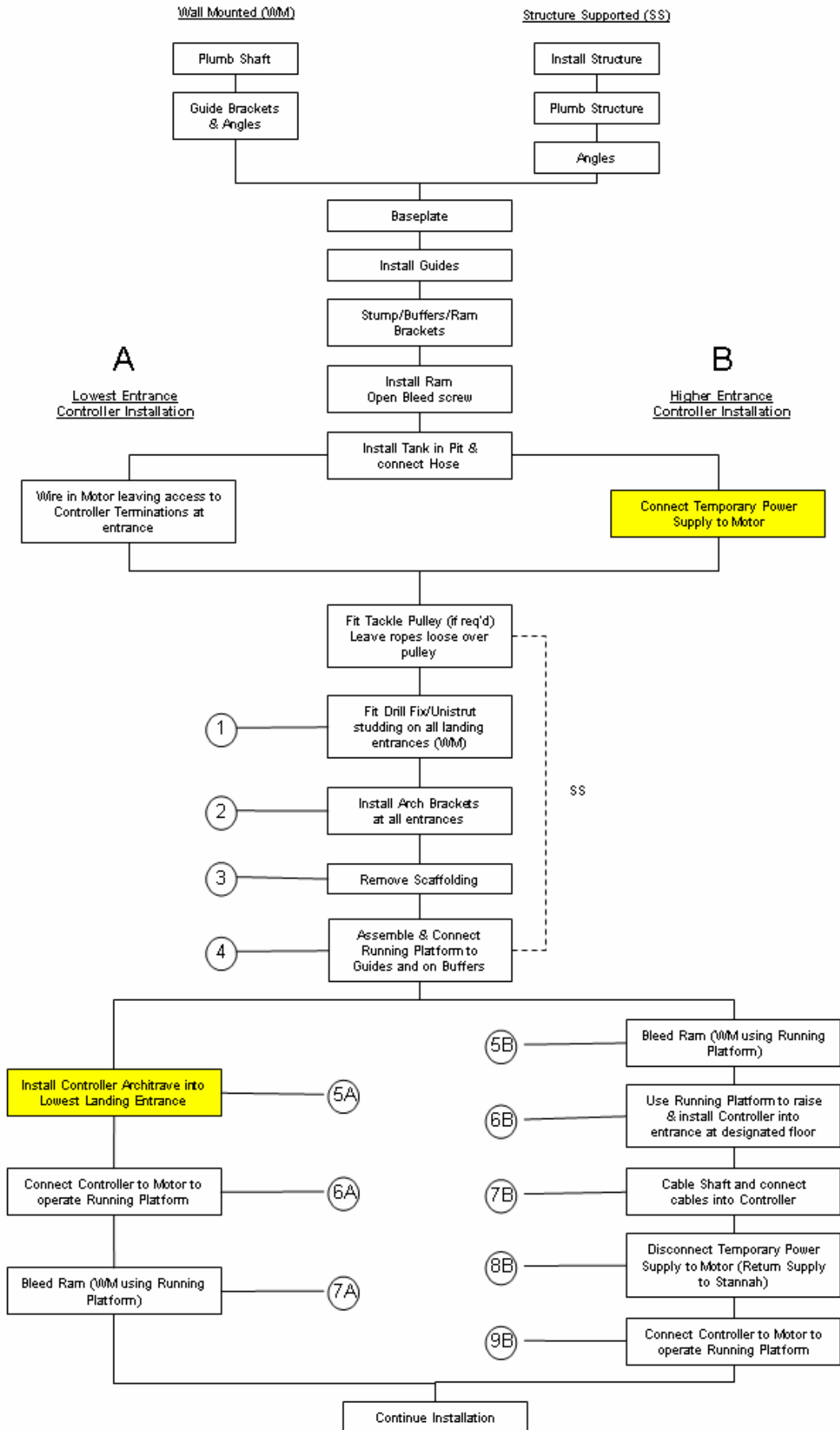
- For Wall Mount (WM) Installations follow flow-chart in its entirety.
 - For Structure Supported (SS) follow flow-chart where indicated by dashed line and SS.
- 1 If Unistruts are not used; Drill Fix - ChemFix M12 studding in position as per BWD on all landing entrances - WM only.
 - 2 Bolt Architrave Mounting Brackets in position on Studding (or to Unistrut) - WM only.



- 3 Remove Scaffolding - WM only.
- 4 Assemble and attach Car Sling and Floor to Guides and on Buffers to provide for a working platform. You may want to cut the Buffers to the correct length beforehand and use the remaining off-cut 40 x 40 section to raise the platform level up to FFL to level car and landing door tracks to each other and set the running clearance.

Refer to following flow-chart;

If Controller on Lowest Entrance follow A. If Controller on Higher Entrance follow B



A - To Install Controller Architrave into Lowest Entrance

Use Sling/Floor Platform on Buffers and Landing Entrance to work from.

- 5A** Install Controller Architrave into Lowest Landing Entrance by following 'Cabinet Installation into Entrance' section below.
- 6A** Connect cables into the Controller by routing up through the Baseplate entrance hole to operate the Running Platform.
- 7A** Bleed Ram using Running Platform.

Continue Installation.

B - To Install Controller Architrave into Higher Entrance

A Temporary Power Supply Unit is required from Stannah Lifts Ltd for this procedure.

Connect the Temporary Power Supply to the motor and operate the Running Platform.



- 5B** Bleed Ram using 'Temporary Power Supply' Running Platform.
- 6B** Use 'Temporary Power Supply' Running Platform to lift all Controller Architrave parts to designated entrance and install by following 'Cabinet Installation into Entrance' section below.
- 7B** Wire shaft and connect cables into Controller by routing up through the Baseplate entrance hole for Running Platform operation.
- 8B** Disconnect Temporary Power Supply to Motor (and return it to Stannah).
- 9B** Connect Controller to Motor and operate Running Platform.

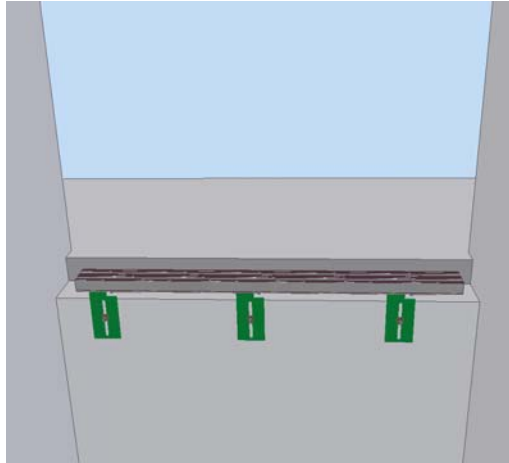
The Running Platform operated by the Controller can now be used as the Working Platform at all entrances for installation requirements.

Continue Installation.

Cabinet Installation into Entrance

The method of installing the cabinet is the same for both WM and SS (WM shown)

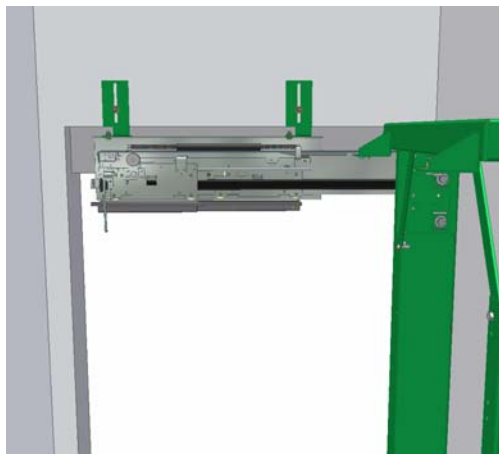
- i Assemble Door Sill to lower Architrave Mounting Brackets and level.



- ii Bolt Architrave Header Assembly to Top Track Running Gear.

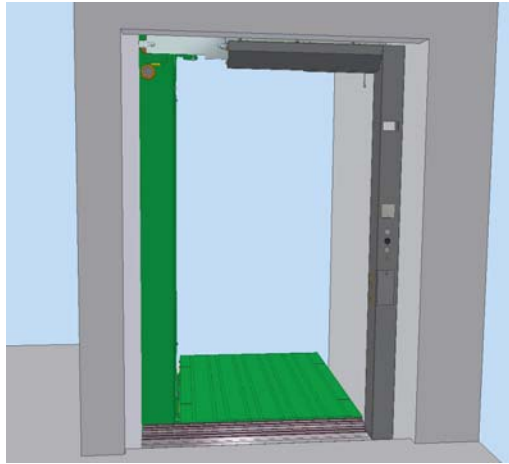


- iii Bolt Header/Top Track Assembly to upper Architrave Mounting Brackets and level so that distance from Door Sill (FFL) to underside of Header Assembly is 2 metres* (i.e. Entrance height). On SS please ensure the Top Entrance Ring is as close to the Top Track as possible to shorten the distance used on the slots of the Architrave Mounting Brackets. This will keep the cabinet corner movement to a minimum.

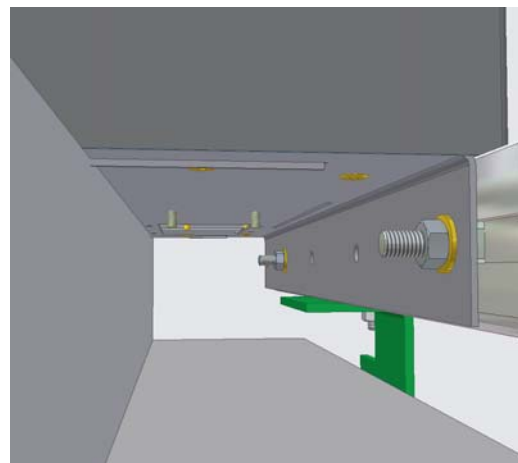
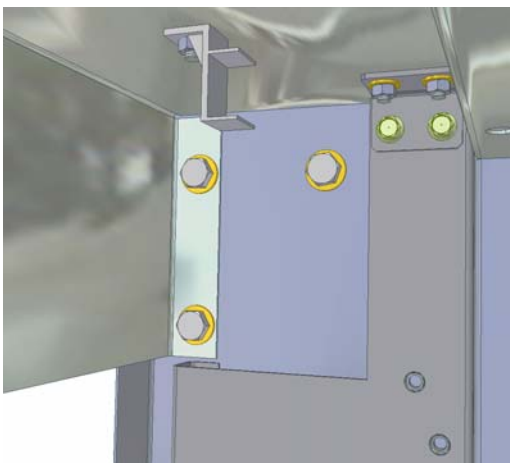
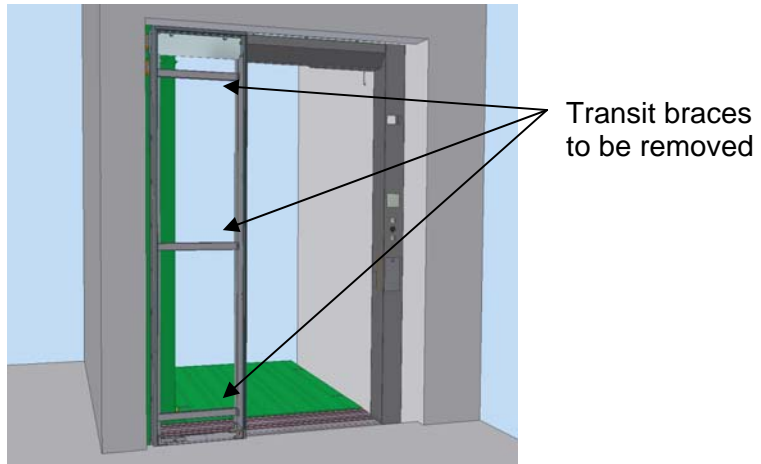


*unless specified by customer

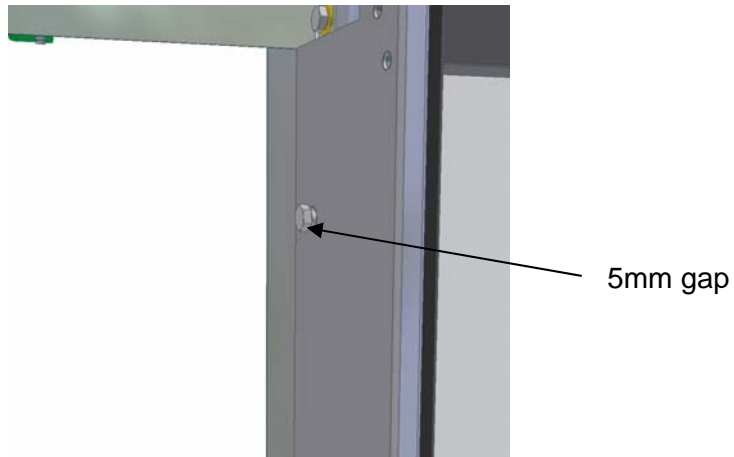
- iv. Bolt Architrave Upright (incl Hand Pump if lowest landing) to Header and Door Sill.



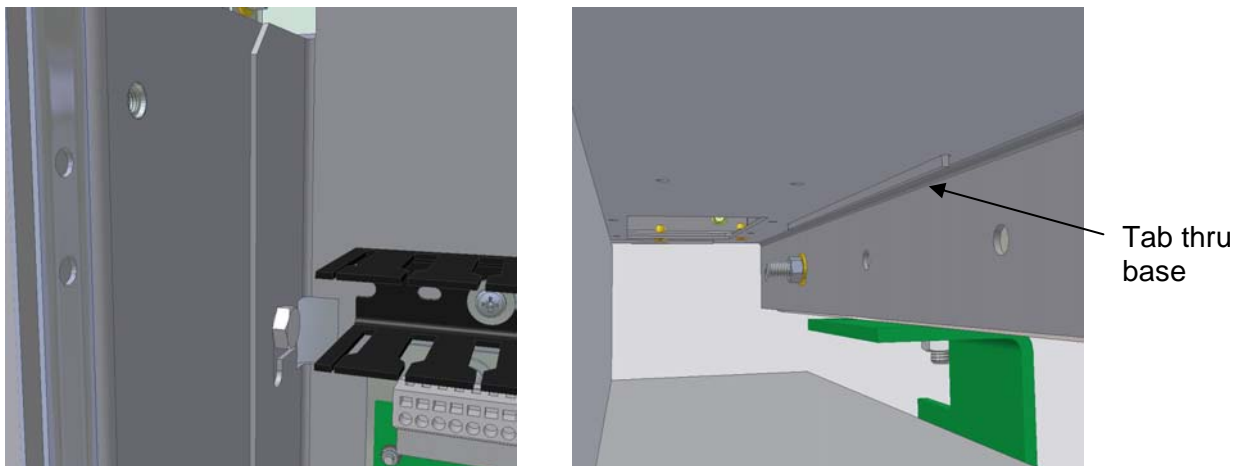
- v. Bolt the Cabinet Frame to the Header and Door Sill in positions shown below and remove the Transit Braces from the Cabinet Frame.



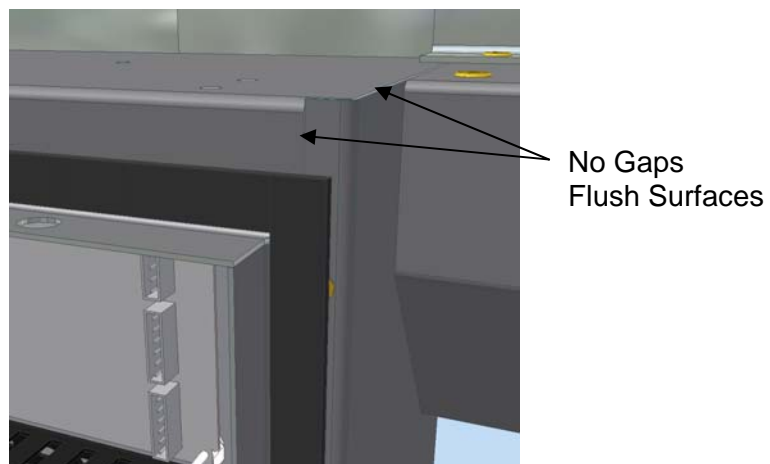
- vi. Ensure Electrical Panel mounting bolts are screwed into the Cabinet Side Panels leaving a 5mm min gap between the bolt head and the side panel inner surface.



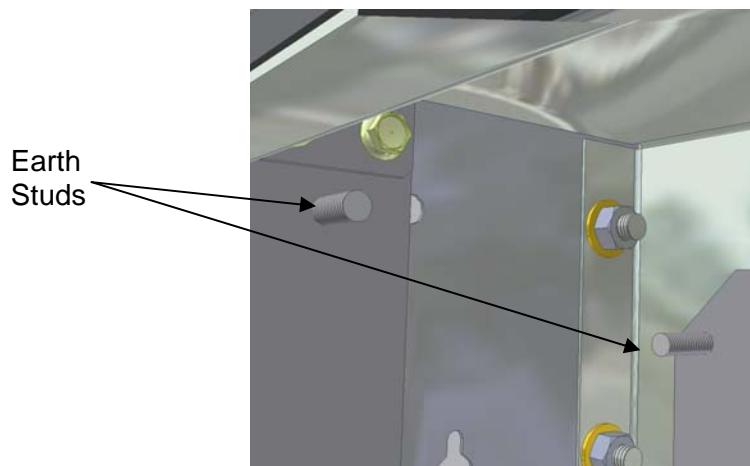
- vii. Mount Electrical Panel into the Cabinet by sliding it from the front inside Cabinet side panel surfaces and locating on the previously assembled bolts. Then drop electrical panel down so that its bottom tab locates into the baseplate slot and all bolts engage correctly into the top part of the electrical panel mounting slots.



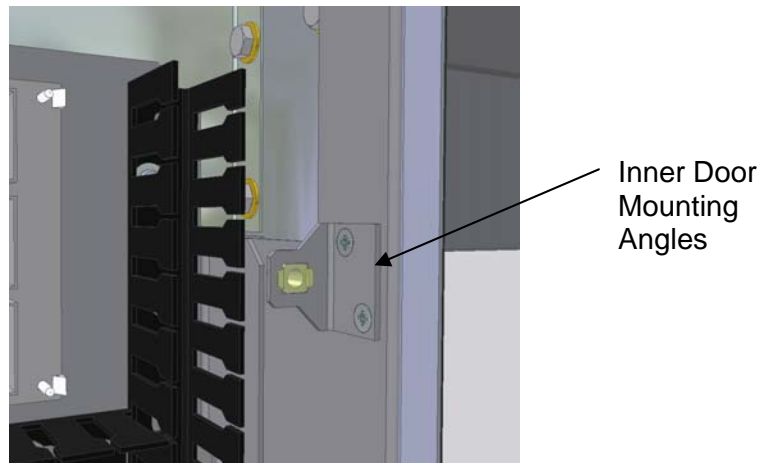
- viii. Ensure that cabinet is square and level and that adjacent surfaces and edges are flush with each other and have minimal visible join lines. If not loosen Electrical Panel Bolts and Cabinet Frame bolts in area requiring adjustment and re-tighten.



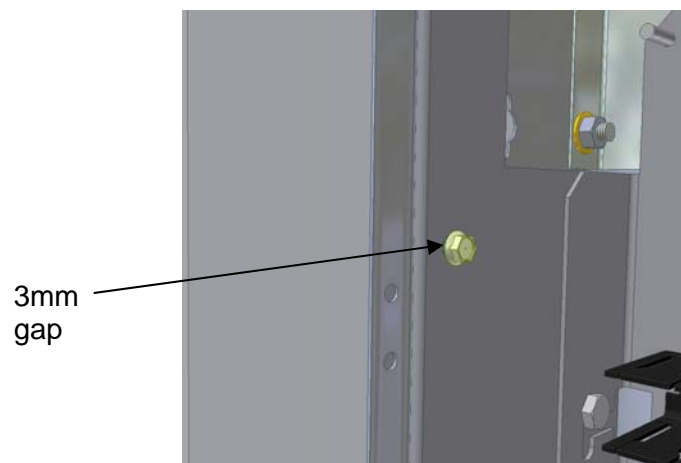
- ix. Connect Electrical Panel Earth to Side Panel Earth Stud.



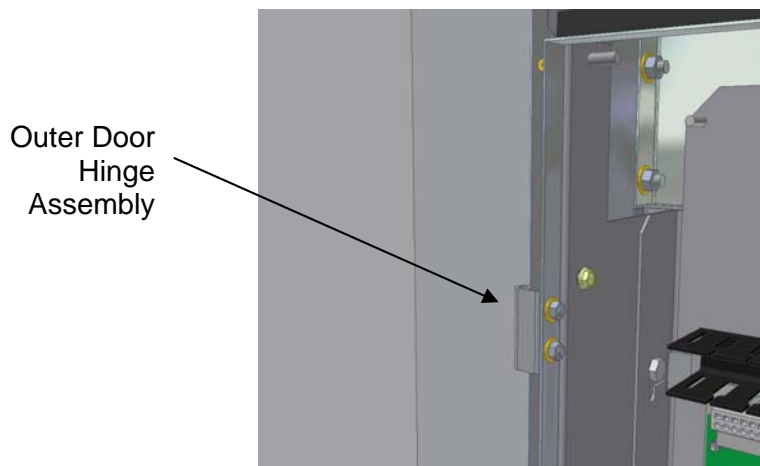
- x. Assemble to Entrance Side Panel inner surface the Inner Door Fastener Mounting Angles.



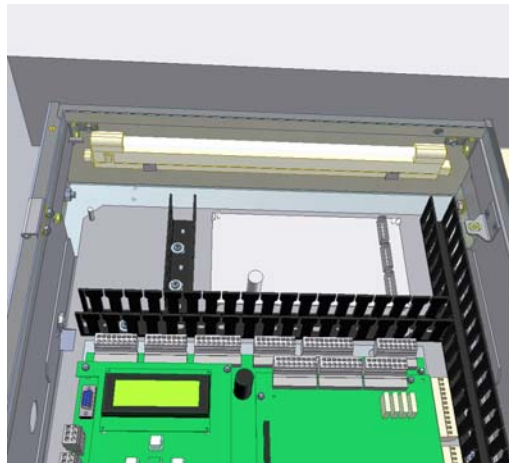
- xi. Bolt to Wall Side Panel the Inner Door mounting screws leaving a 3mm gap between screw head and side panel surface.



- xii. Bolt to Wall Side Panel the Outer Door Hinge assemblies.

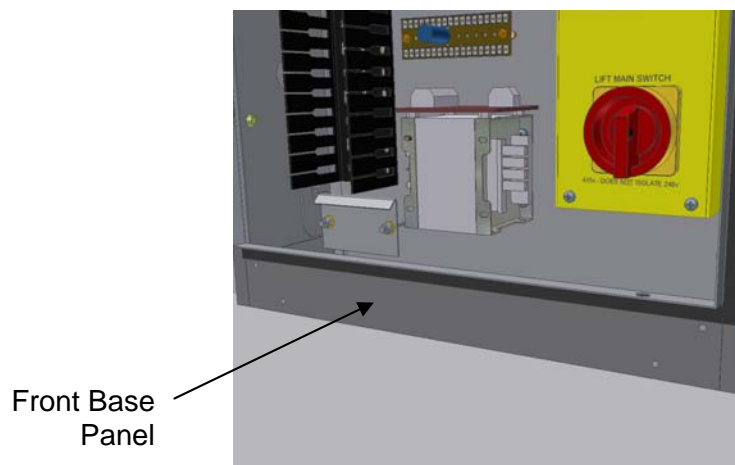


- xiii. Fit Fluorescent Lamp into Top Panel clips and wire in.



- xiv. Cable shaft and wire Controller to operate Running Platform.

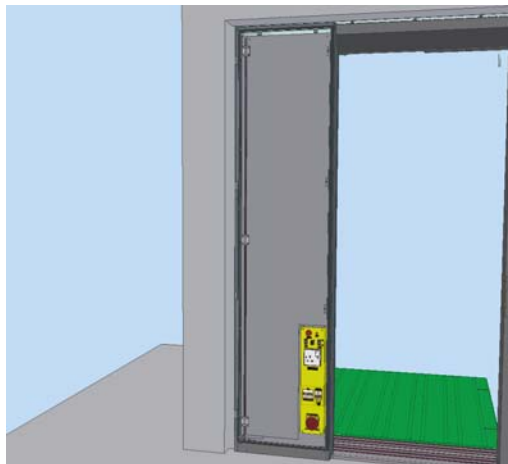
- xv. Fit Front Base Panel to Base Brackets so that Panel is flush with front surface and Side Panel knife-edges. Tighten nuts.



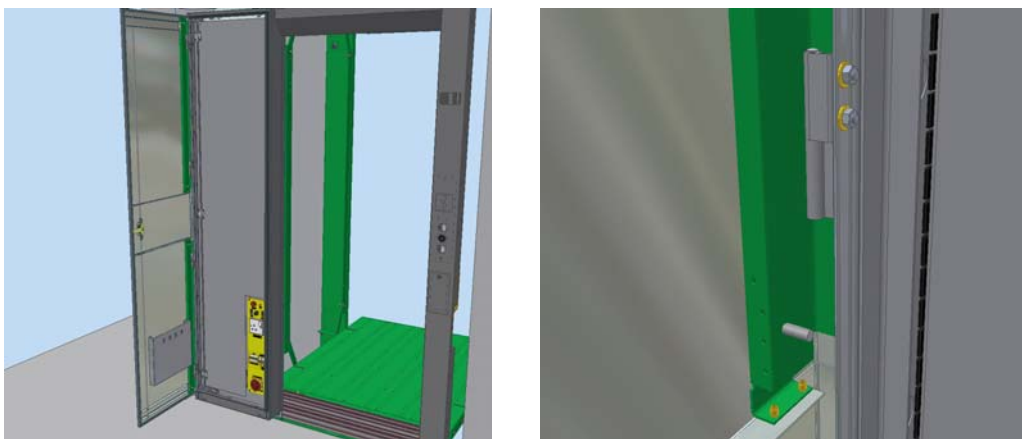
- xvi. Assemble the Inner Door into the Cabinet by 'hooking' its vertical hinge bracket over the screw heads on the Wall Side Panel and dropping it on the slots. Close the door & engage the quarter-turn fasteners into the Inner Door Fastener Mounting Angles and turn them until they click home in the vertical position. Tighten the screws on the vertical hinge bracket. Check Inner Door open and closes without obstruction.



- xix. Stick labels and notices on to the front face of the Inner Door as required.



- xx. Assemble the Outer Door on its hinges by holding it in position and dropping the hinge pins through the Door's hinge assembly. Align Door centrally top, bottom, left and right and tighten all hinge nuts. Close Door and check that lock cam fully engages in the entrance side slot. To ensure full clearance of door opening, open to 90°. Place required documents in document holder in door. Close and Lock door.



Continue with Installation.

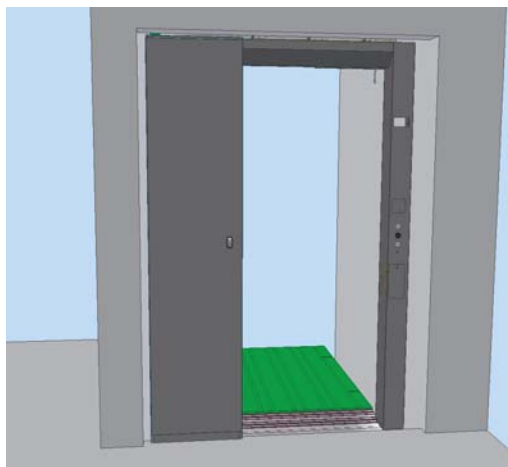
Finishing Off Notes to Builder

Cabinet to be permanently fixed into entrance using Gripfill™ or similar.

Do not plaster over Wall Side Panel hinge front face. This will prevent the cabinet door opening.

Do not build nibs over or obstruct any landing door sills. This will prevent the Lift Landing Doors from opening.

All Architrave visible surfaces to remain free from damage.



Approximate weight of components

Temporary Power Supply Unit - 9kg

Electrical Panel - 35kg

Cabinet Frame Assembly - 20kg

Front Door Assembly - 15kg

Inner Door Assembly - 8kg